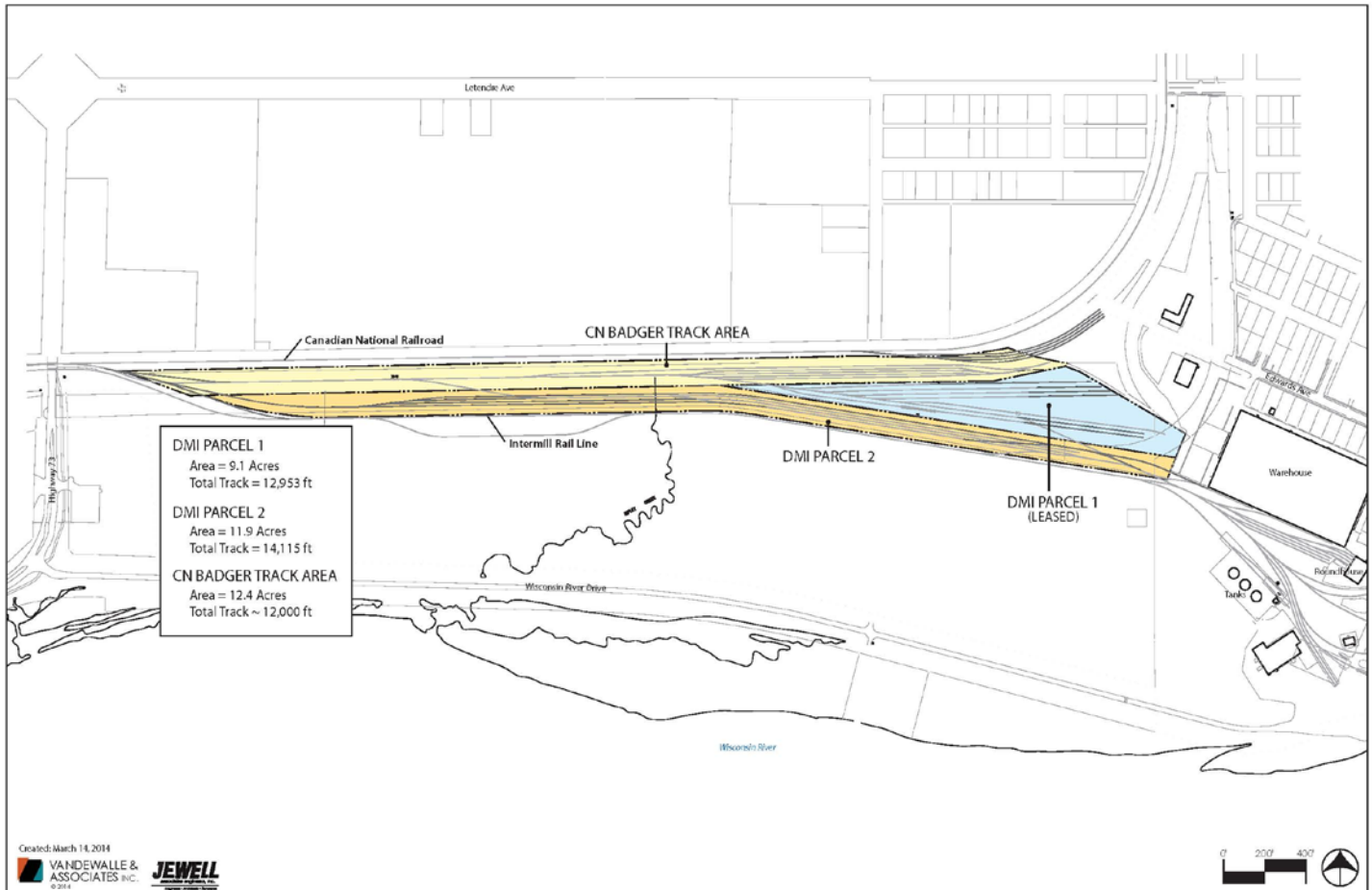


# CENTRAL WISCONSIN APPLIED RESEARCH & BUSINESS PARK

GROWING INNOVATIVE NEW BUSINESSES FROM DEEP WISCONSIN ROOTS

100 Wisconsin River Drive  
Port Edwards, WI 54469

## RAIL YARD



**Total Yard Size:** Two parcels totaling 21 acres and more than 5 miles of spurs

**Available:** All or part of an 11.9-acre parcel with 14,115 feet of spurs

**Lease Type:** Triple Net + CAM

**Lease Rate:** Negotiable

**Occupancy Date:** Immediate

**General Description:** Large private rail yard with three switches to adjacent Canadian National main line. Site has primary access spur serving both rail yards and all parcels on the property. Site has room to add additional rail car storage area and has direct connections with adjoining CN Badger Track Area with 12,000 feet of spurs.

**Contact: Joe Moore, COO**  
**DMI Acquisitions, LLC**  
**Off: 614-252-1811**  
**Cell: 614-625-2815**

All information contained on this sheet is deemed reliable but not guaranteed. DMI Acquisitions, LLC, does not guarantee accuracy of information. All material information must be independently verified by buyer.